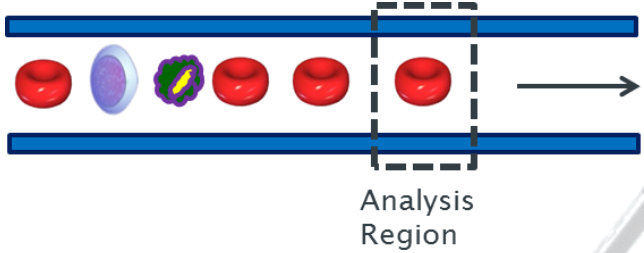
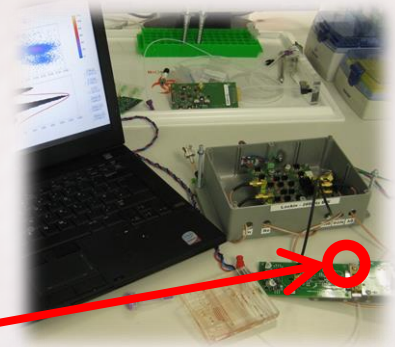
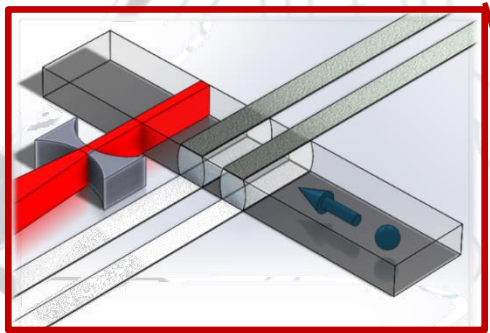


1. Flow cytometry

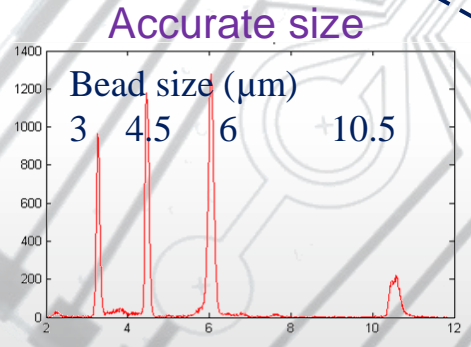
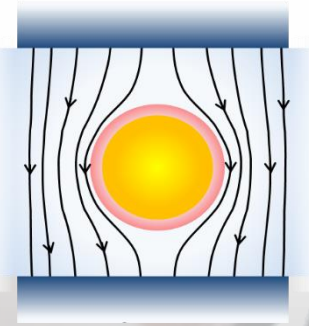


2. Miniature flow cytometry

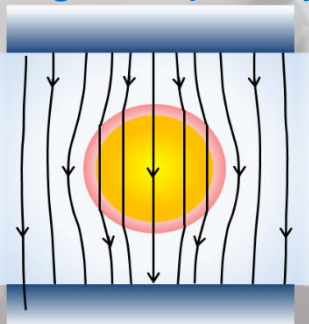


3. Electrical cytometry

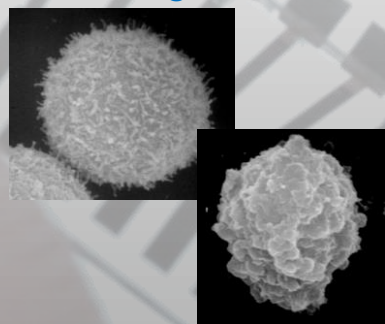
Low frequency



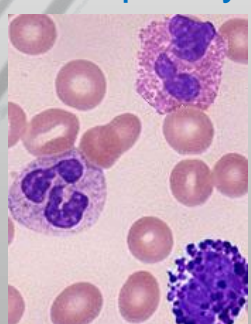
High frequency



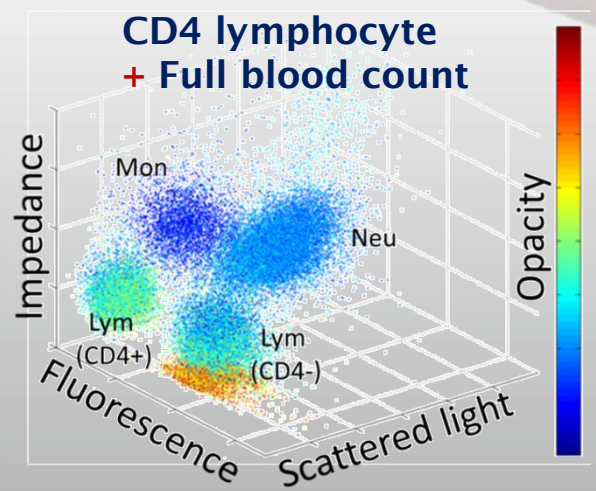
Membrane roughness



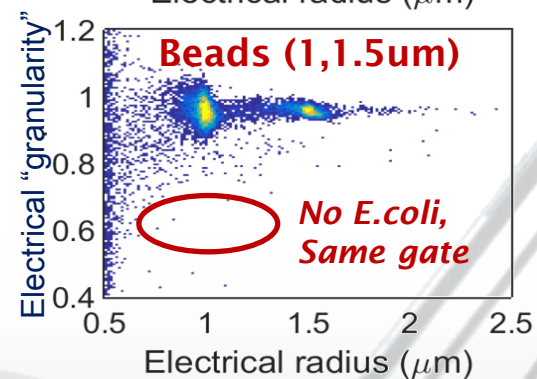
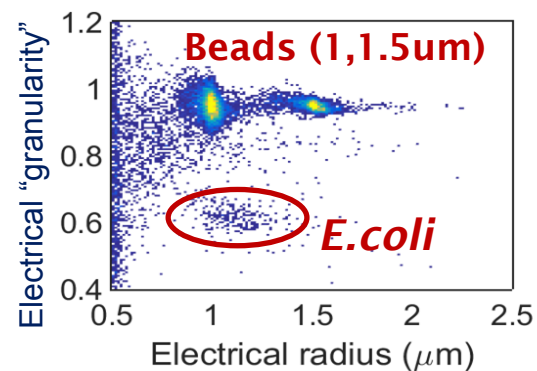
Internal complexity



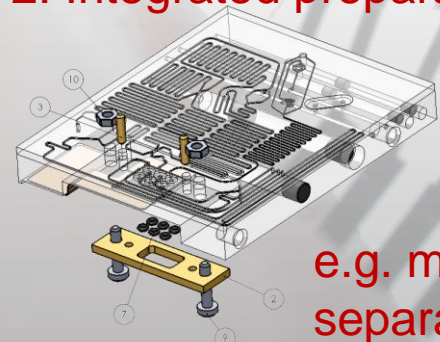
4. Electrical + light



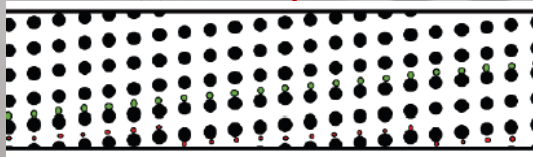
1. LoD- Bacteria



2. Integrated preparation



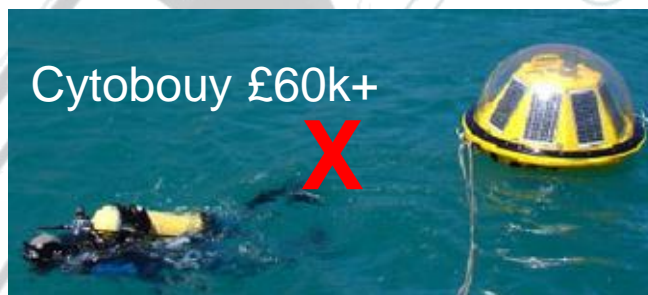
e.g. microfluidic separation array



3. Harmful algal blooms



-need for continuous monitoring



Micro-cytometer

